



# POWER RAIL AUSTRALIA

Phone: (02) 3838 4508

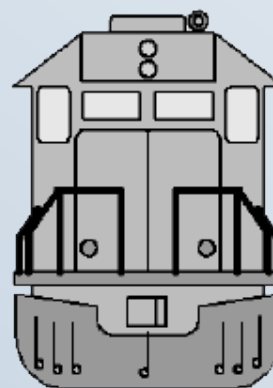
1-800-PRD-AU0

Email: [Sales@ePowerRail.com.au](mailto:Sales@ePowerRail.com.au)

[www.PowerRailAustralia.com.au](http://www.PowerRailAustralia.com.au)

**Uniting Innovation, Engineering, Manufacturing, and Distribution**

**PowerRail Australia proudly presents our newly expanded line of Locomotive Hoses, meeting Australian Standards AS 2435-1992 for Australian Rail Operations.**



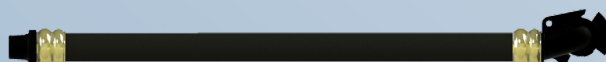
Main Reservoir  
Actuating, Application,  
Release & Sanding

Trainline

Main Reservoir  
Actuating, Application,  
Release & Sanding



PowerRail Part #	Length (mm)	Length (FT)	Type	Fitting	ID (mm)	I.D (BSPT)
S243300	721mm	2 ft 4 in	Brake Pipe	FP5	35.01	1-1/4"
S243305	720mm	2 ft 4 in	Main Res	FP3	22.3	3/4"
S243306	755mm	2 ft 5 in	Brake Pipe	FP4	29.5	3/4"
S243307	735mm	2 ft 4 in	Main Res	FP3	29.5	3/4"
S243314	788mm	2 ft 7 in	TMX	LH Elbow Flange	22.3	3/4"
S243325	723mm	2 ft 4 in	Control	CP #3 Type B	12.5	1/2"
S243326	683mm	2 ft 2 in	Control	IRP #4	12.5	1/2"
S243327	750mm	2 ft 5 in		OA	22.3	3/4"
S243377	895mm	2 ft 11 in	Control	CP #3 Type B	12.5	1/2"
S243384	950mm	3 ft 1 in	Brake Pipe	FP5	35	1-1/4"



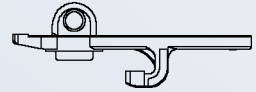
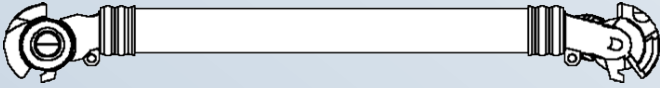
**Don't Forget the Gasket!**  
Part # W563952  
FS5 Gasket



[www.PowerRailAustralia.com.au](http://www.PowerRailAustralia.com.au)



## Dummy Hoses & Couplings



PowerRail P/N	Length (cm)	Hose Size (mm)
N777356	32.0675cm	28.575mm
N777355	38.4175cm	28.575mm
N777357	42.2275cm	28.575mm
N777358	44.7675cm	28.575mm
N777889	70.1675cm	28.575mm

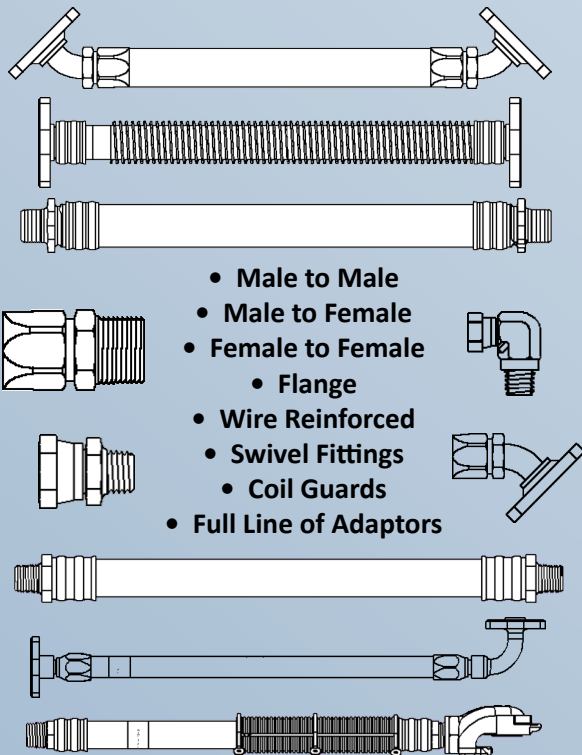
PowerRail P/N	Type	Vent Holes	Chain Length
N703123	H-3	Yes	19.05cm
N756979	H-3	Yes	35.56cm

## Engine Related Fuel, Oil and Air Hoses

PowerRail P/N	Application
E9320120	Detector to Water Pump
E9320121	Detector to Water Pump
E9320122	Detector to Water Crankcase
E9319341	Governor Oil Drain
E9319342	Lube Oil
E8155981	Wiper
G140X2954	Low Pressure Fuel
G140X1553	Turbo Oil Feed
G140X2935	Oil Drain

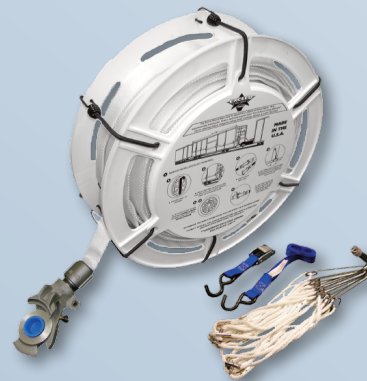


## Freight Car and Specialty Hoses



- Male to Male
- Male to Female
- Female to Female
  - Flange
- Wire Reinforced
  - Swivel Fittings
  - Coil Guards
- Full Line of Adaptors

### Run-A-Round Hose - Part # 16186897



- Get a train moving again within 15 minutes of identifying the crippled car
- No need to move the crippled car to a siding
- Can be installed by 1 person without tools
- For use on cars up to 89' in length (multiple units can be connected)
- Weight: 18.5 lbs.
- Overall diameter: 19.5"

