



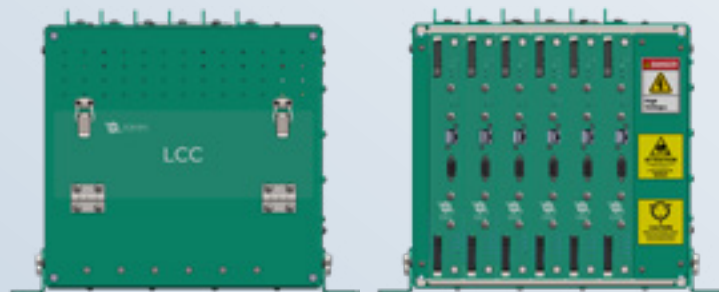
POWER RAIL AUSTRALIA

PowerRail Australia
Phone: 1-800-PRD-AU0
1-800-772-280

Email: Sales@ePowerRail.com.au

Uniting Innovation, Engineering, Manufacturing, and Distribution

To meet the demands of the rapidly modernizing rail industry, PowerRail proudly offers the **Locomotive Control Computer (LCC)**.

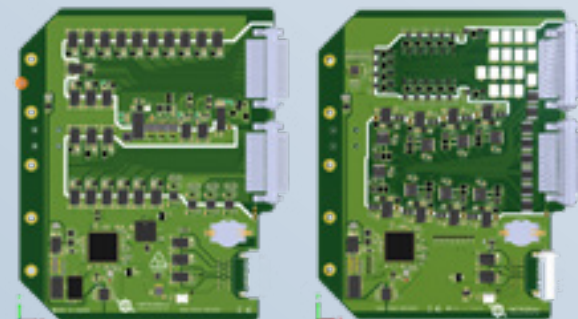


Locomotive Control Computer (LCC)

The Locomotive Control Computer (LCC) is a flexible, card-based control system designed with the latest technology to serve as a replacement or upgrade to outdated or non-supported systems (QES/QTrac/NFORCE). The LCC is compatible with most conventional locomotives (EMD and GE), multi-engine locomotives (gensets), and new tech locomotives (battery and battery hybrids).

FEATURES:

- Customized operating software to meet customer specific requirements
- Remote monitoring via cellular or satellite data communication with text and email alert sequences
- Analog and digital IO channels are independently isolated for superior fault isolation
- Utilizes doppler ground speed radar for absolute ground speed measurement
- Directly interfaces with the Integral suite of Power Electronic Propulsion Systems (DC choppers and AC inverters) for low and zero emission locomotives
- Wall or shelf-mount flexibility
- IO cards have double the capacity for digital inputs and outputs compared to others on the market; 32 inputs and 16 outputs
- Provides up to 27 communication ports (serial, CAN, and USB) for user maintenance or integration with additional subsystems, such as high-speed engine computers, telemetry systems, EAB, etc.



LCC CPU Card

LCC IO Card



12" LDU Display



8" LDU Display

- Full color, touch screen LDU interface in-cab display available in both 8" and 12" sizes
- Resistive touch with function buttons
- Fully integrated to view Electronic Air Brake, Distributed Power, End of Train and LCC data



www.PowerRailAustralia.com.au