



POWERRAIL

AUSTRALIA

PowerRail Australia

Phone: 1-800-PRD-AU0

1-800-772-280

Email: Sales@ePowerRail.com.au

Uniting Innovation, Engineering, Manufacturing, and Distribution



Aurolite™ Smart Box

PowerRail Part #: 16188263

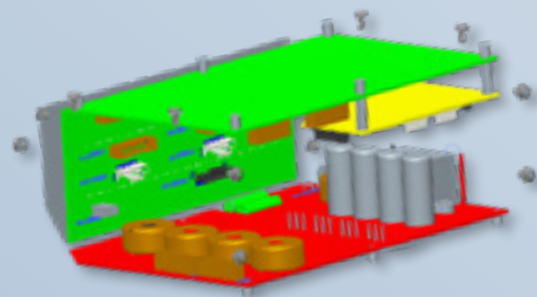
PowerRail is proud to introduce the latest cutting-edge technology in locomotive lighting, the Aurolite™ LED Dual Control Headlight and Ditch Light Smart Box Control System. This innovative system controls both Headlights and Ditch Lights at the same time.

Features of the Aurolite™ Smart Box:

- Works with all EMD and GE Locomotives
- Works with or without Resistors - NO Rewiring of Unit
- Designed for Replacing Resistors and Conventional Ditch Lights
- Controls Headlight and Ditch Light at the Same Time
- Operating Voltage from 50V to 170V (120V AC Suitable)
- Flashing controls - 75V DC Applications
- Complies with EN 50155:2017, IEC 61373 Cat. 1 Class B
- Simple Connection to AAR Control Stand or Locker
- True Solid-State Design with Quick Terminal Connection
- UL Listed Components
- Lightweight at only 15 lbs.
- Compact size - 11" x 5" x 7"
- Two Year Warranty



PowerRail Part #: 16188263



www.PowerRailAustralia.com.au

The Aurolite™ Smart Box utilizes one specially designed and patented LED Bulb for both the Headlights and Ditch Lights.

Fits ALL Housings - NO Modifications Required

PowerRail Part #: LED350PAR56LC

Features of the LED350PAR56LC:

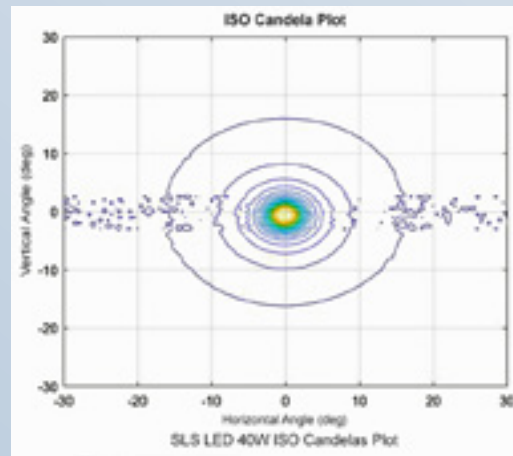
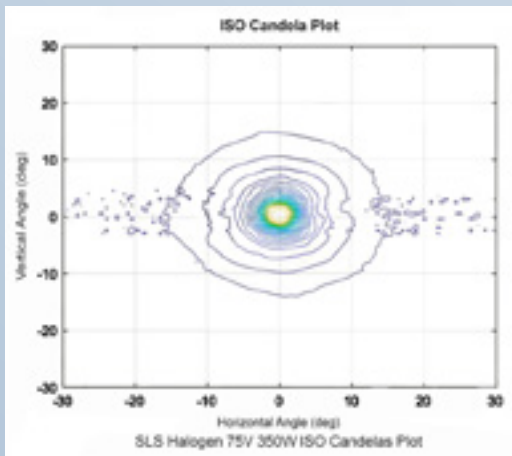
- Built-in LED Driver - No Rewiring or Modifications Required
- Headlight Operates on 3 Settings - DIM, MEDIUM, and BRIGHT
- Ditch Light offers Flashing / Alternating option
- Same bulb used in both Headlight and Ditch Light applications
- 75V DC and 120V AC when used with Aurolite™ Smart Box
- Meets AAR Standard S-5516
- FRA Approved in Compliance with 49 CFR § 229.125
- Provides IP67 Protection from Water Damage
- Designed to Operate in Extreme Heat or Cold
- Idiosyncratic Lens/Reflector Designed to Melt Ice and Snow
- Patented Design Provides 200,000 Candelas for **COMPLETE** Life of the Bulb
- Minimum 200,000 Candelas with a Life Rating of over 50,000 Hours
- 5-minute Flash when Light Output Diminishes Below 200,000 Candelas
- Proprietary Circuit Board Design Resistant to Excessive Shock and Vibration
- Patented Heat Sink Design Provides Optimal Heat Dissipation Allowing for Peak Efficiency



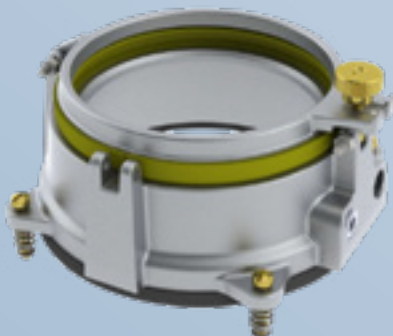
**PowerRail Part#
LED350PAR56LC**

Lamp Compliance:

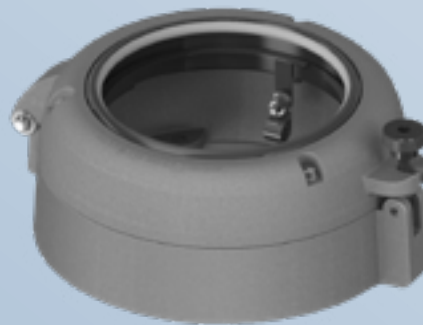
- EN 50121
- EN 50125
- EN 50155:2017
- IEC 60529
- IEC 61373 Cat. 1 Class B



PowerRail's LED350PAR56 LED Bulb can be installed in standard Headlight and Ditch Light Housings.



Part # E8650814



Part # G41B549606P1



www.ePowerRail.Com